



Ashton

The Ashton is a log home overflowing with country charm. Outside, the wrap-around porch is ideal for Sunday afternoon sessions in the rocking chair. Inside, a large foyer welcomes visitors to a living room dominated by a soaring stone fireplace. A bay window highlights a casual dining room served from an efficient u-shaped kitchen. Opposite the dining room is a master suite with its own bay window; a spacious master bath and walk-in closet. Upstairs, four bedrooms and two baths form a horseshoe around the greatroom. Ideal for entertaining, the Ashton is a stunning house for any setting.



*Country charm fills
a two-story classic.*

2104 sq. ft.
Bedrooms: 5 Baths: 3 1/2
33' 3" x 76' 3"

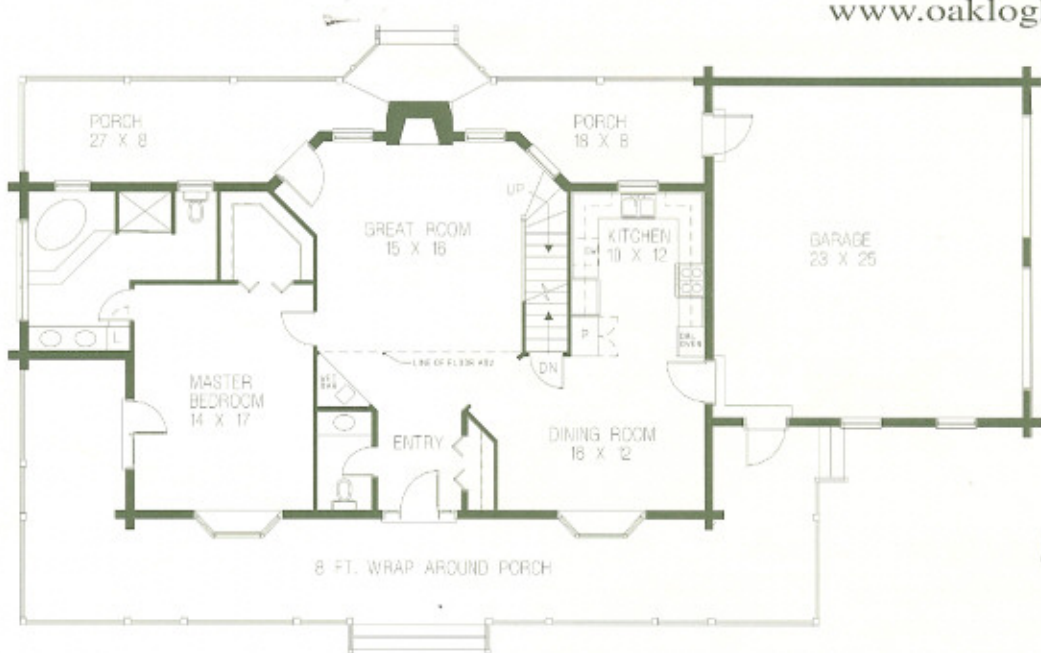
Ashton



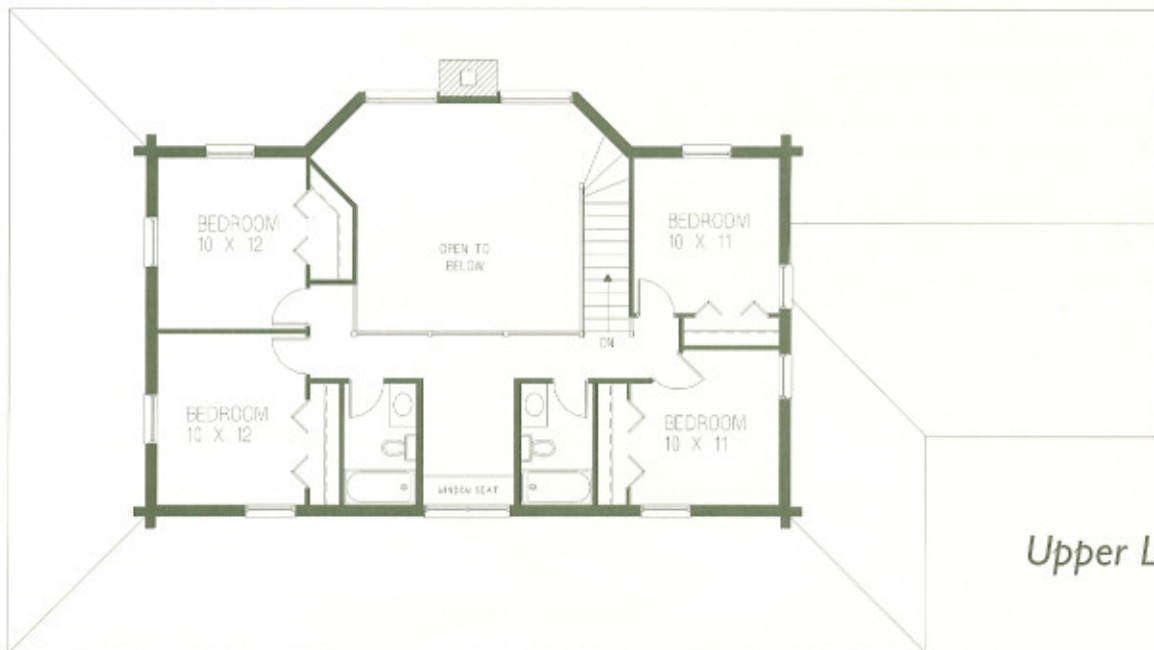
GASTINEAU
Log Homes

www.oakloghome.com

DESIGNS



Lower Level



Upper Level