

# Brunswick

DESIGNS

**O**ur Brunswick meets all the requirements for today's lifestyle. Rooms are spacious and oriented to relaxed living. A den off the main foyer makes an ideal office for a home-based business or telecommuter. The greatroom, family room and kitchen together form a massive public area for family activities or entertaining. There are plenty of bedrooms for a larger family or frequent overnight guest. The large master suite with its luxury bath adds a touch of informal elegance. The Brunswick includes a three car garage, ideal for an enclosed workshop near the automobiles.



*Unique window shapes highlight this affordable luxury home.*

2640 sq. ft.  
Bedrooms: 4 Baths: 2 1/2  
33' 3" x 76' 3"

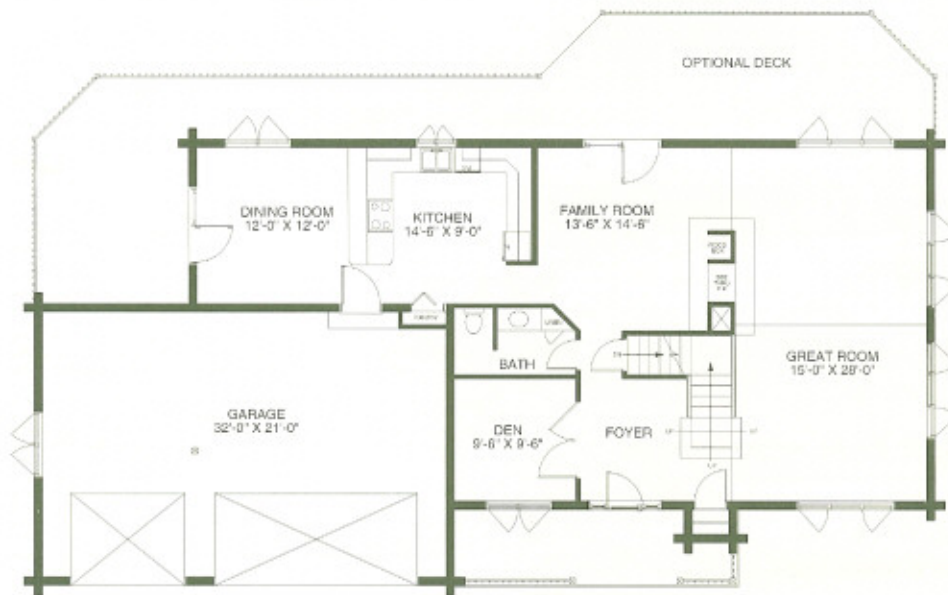
# Brunswick Floor Plans



**GASTINEAU**  
**Log Homes**

[www.oakloghome.com](http://www.oakloghome.com)

DESIGNS



*Lower Level*



*Upper Level*