



Georgetown

The list of features in our Georgetown reads like a checklist of many people's log home dream. Inside the airlock entry one turn leads into a sunken family area with stone fireplace. The opposite turn leads into a large den or library. The kitchen flows into a spacious breakfast area that flows on into a formal dining area. All three are capped with exposed beam ceilings. Its expansive living room features a cathedral ceiling. A short hallway leads into a bi-level master suite hallmarked by a circular staircase to a sleeping loft. On the second floor, three bedrooms, a dressing area and game room provide plenty of private living space. An ideal house for entertaining or casual family living.



When your goal is elegant living with lots of space.

4859 sq. ft.
Bedrooms: 4 Baths: 2 1/2
77' 3" x 79' 3"

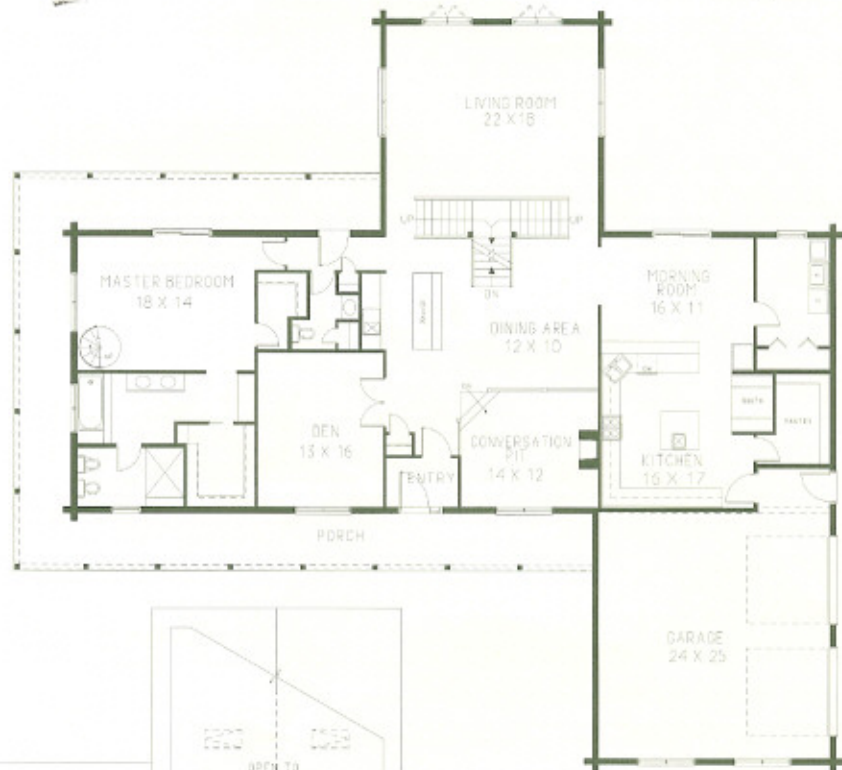
Georgetown Floor Plans



GASTINEAU
Log Homes

www.oakloghome.com

Lower Level



Upper Level

