

# Hideaway

**S**urrounded by walls of solid wood, fire crackling in a stone fireplace, rain gently pattering on the roof, the Hideaway captures the essence of security and comfort that is a log home. A spacious sleeping loft adds floor space and completes the timeless feeling. Tucked away in the woods or overlooking the beach, here is a truly great escape home.



*A great getaway with a traditional look.*

975 sq. ft.  
Bedrooms: 1 Baths: 1  
31'3" x 21'3"

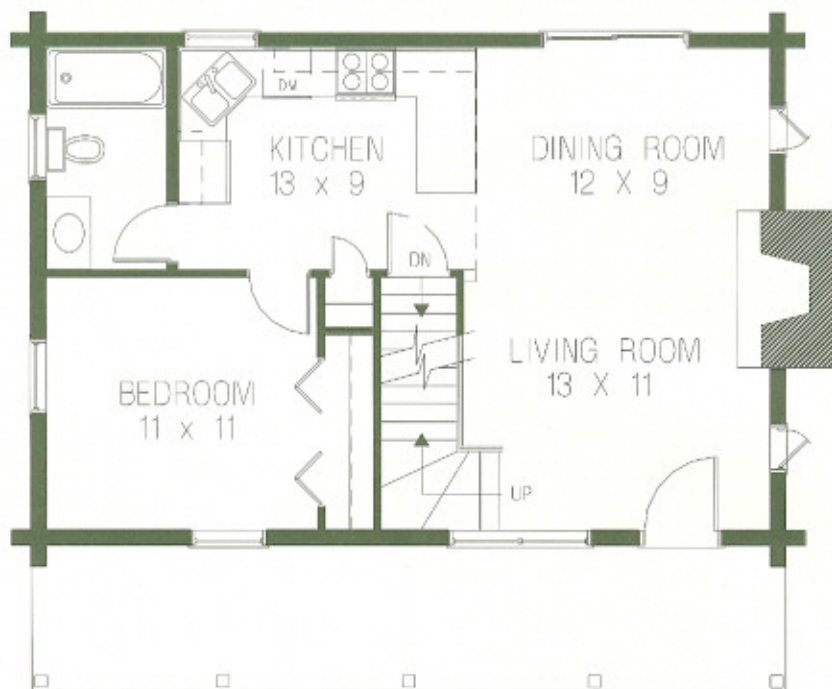
# Hideaway Floor Plans



GASTINEAU

Log Homes

[www.oakloghome.com](http://www.oakloghome.com)



**Upper Level**

