



Oakridge

Capture the elegance of a country estate with our Oakridge. Its floorplan include many of the most popular features in a luxury log home. A split foyer leads up a stunning living room faced with a two story prow. Continue upstairs for an aerial view from the spacious loft. Follow the hall to an enormous master suite with its well appointed bath. Prepare a gourmet meal while watching wildlife out the bay window that doubles as a breakfast nook. With two bedrooms upstairs, three on the main floor and plenty of baths, the Oakridge is large enough for most families or hang out your Bed & Breakfast shingle.



Country estate overflows with features.

2900 sq. ft.
Bedrooms: 4 Baths: 3
74' 3" x 45' 3"

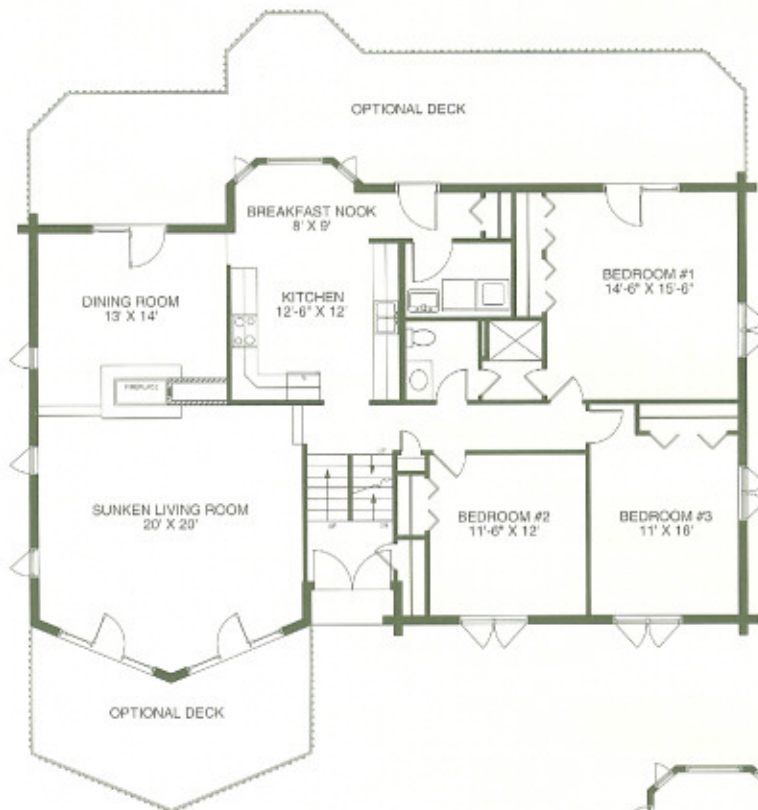
Oakridge Floor Plans



GASTINEAU
Log Homes

www.oakloghome.com

DESIGNS



Lower Level

Upper Level

