



# Shenandoah

Like the river, our Shenandoah brings to mind images of smoky blue mountains, tumbling brooks and hillsides clothed in laurel. The wrap-around porch invites summer gatherings or solitary lounging. The inside is dominated by the central great room, a large living area that merges into a dining area served by a spacious kitchen. A large master suite is located apart from the other bedrooms for maximum privacy. This elegantly simple floor plan is crowned by a catwalk arching over the center of the greatroom, joining two dormered lofts.



A design reminiscent of an  
Appalachian lodge.

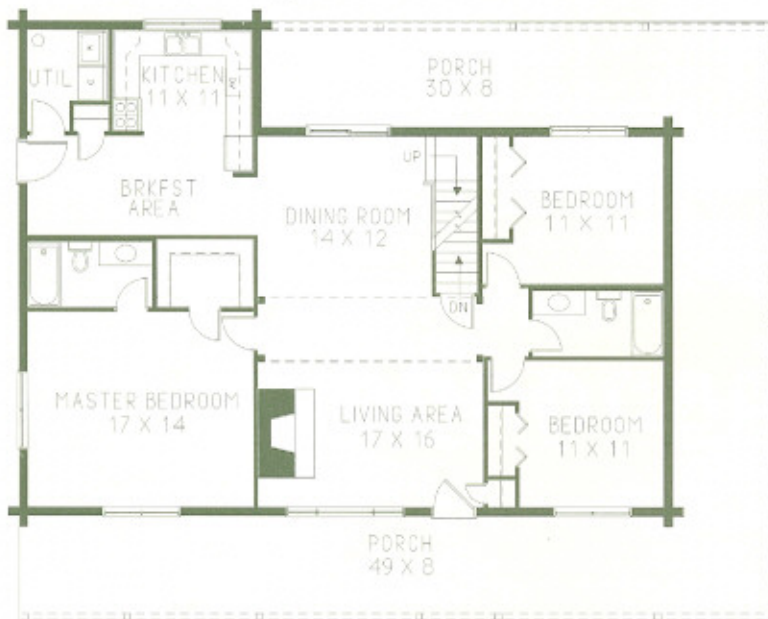
2550 sq. ft.  
Bedrooms: 3 Baths: 2  
49' 3" x 37' 3"

# Shenandoah Floor Plans



**GASTINEAU**  
**Log Homes**

[www.oakloghome.com](http://www.oakloghome.com)



*Main Level  
1565 Sq. Ft.*

*Loft Level  
985 Sq. Ft.*

