



Twin Rivers

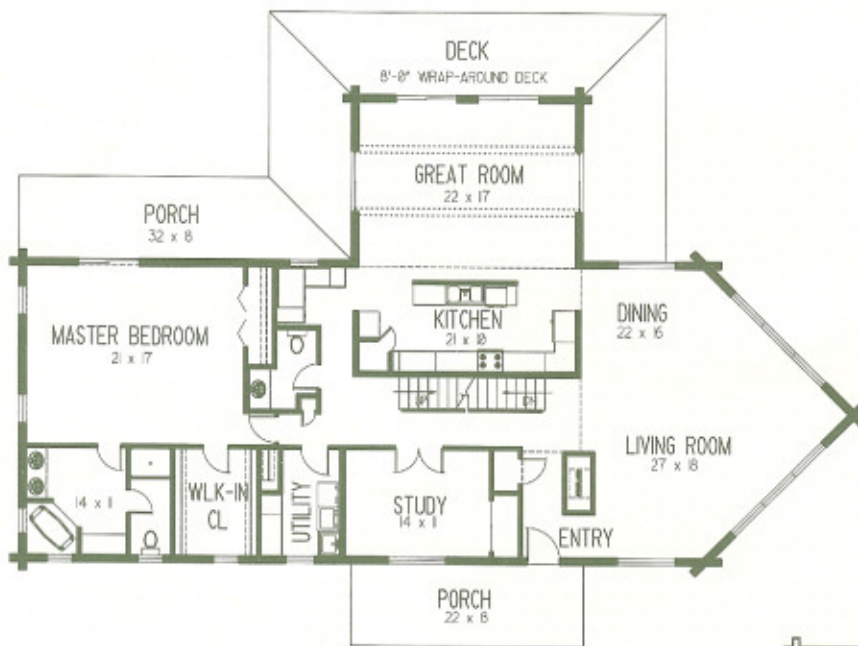
This new floor plan has unique features that can be found throughout the home. There are cathedral ceilings in the prow shaped living room and in the great room off the kitchen. The loft opens onto a balcony over the front entrance. The oversized Master Suite has access onto the covered porch. There is a computer niche off the kitchen plus a separate study. The two bedrooms share a split bath on the second floor. There are two distinct loft areas as well with one loft looking down into both the living room and the great room. An optional attached garage is available also.

3962 sq. ft.
Bedrooms: 3 Baths: 2 1/2
81' 0" x 45' 3"

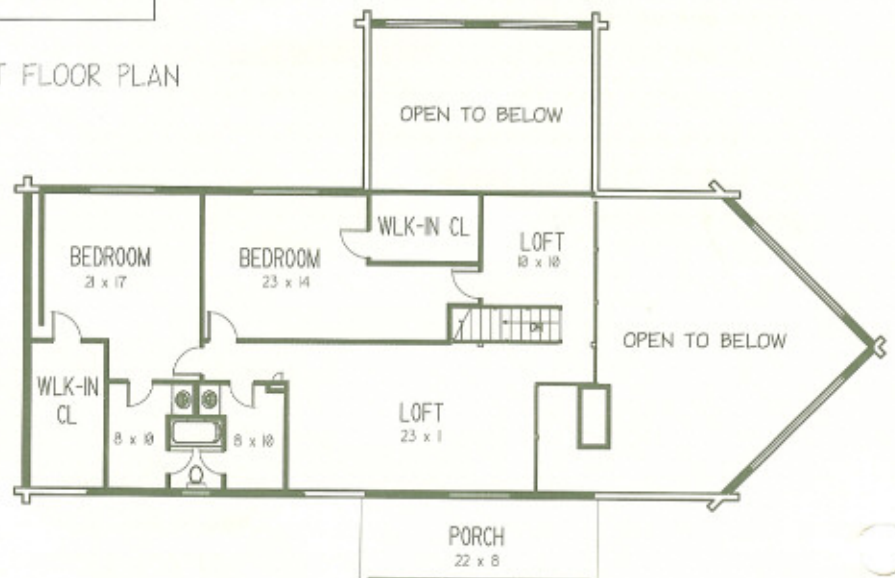
Twin Rivers Floor Plans



GASTINEAU
Log Homes



FIRST FLOOR PLAN



SECOND FLOOR PLAN