



# Windsong

DESIGNS

**T**he angled garage and entryway give a contemporary flair to a deceptively simple front view of our Windsong. But walk around to the spectacular soaring prow and it is immediately apparent that here is a truly luxury log home. Inside, the floorplan quickly confirms this impression. A comfortable foyer quickly leads into an angled greatroom where windows dominate. Or you can climb the stairs to a cozy loft that makes an ideal office or library. A fireplace rising through the center of the house creates separate areas served easily by the flanking kitchen. The master suite occupies its own wing, giving privacy from the other bedrooms. A one floor version provides an opportunity to accommodate different size and budget requirement.



*A spectacular prow for that setting with a view.*

3070 sq. ft.  
Bedrooms: 3 Baths: 2  
81' 6" x 89' 6"

# Windsong Floor Plans

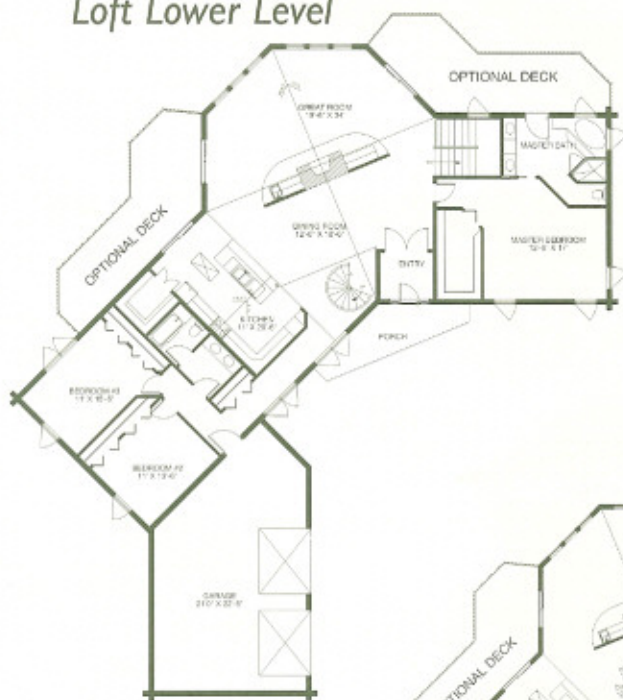


GASTINEAU

Log Homes

www.oakloghome.com

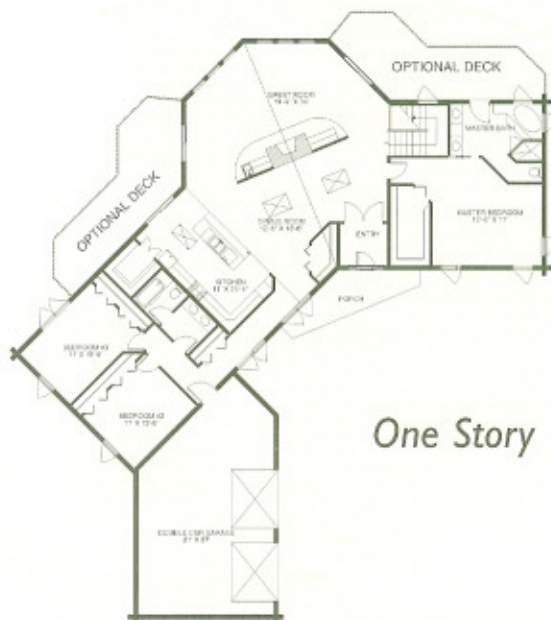
Loft Lower Level



Loft Upper Level



One Story



DESIGNS